

## We're on the Web!



[www.eastportmpa.com](http://www.eastportmpa.com)



[www.gilbertbay.com](http://www.gilbertbay.com)

## Thanks to Our Friends & Sponsors!

Kittiwake Economic Development Corporation

Labrador Southeast Coastal Action Plan

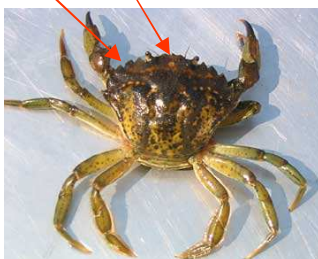
## Beware the Violet Tunicate!

The aliens are coming! Aquatic invasive species are starting to hitch rides into Newfoundland waters. That's the message coming from DFO, DFA, and the provincial aquaculture association. They want coastal communities to be on the lookout for these unwanted invaders.

### Green Crab

Newfoundland and Labrador does not have Green Crab infestations as bad as those causing serious losses for harvesters in the Maritimes. However, green crabs have been found around North Harbour in Placentia Bay. DFO, DFA and Memorial University all sent scientists to investigate. They hope that the green crab will not thrive here, but admit that the outlook is not great. The creatures are unbelievably hardy to a variety of conditions and can survive out of water for three weeks or more. Young ones are smaller than split peas, so it's easy for them to go unnoticed in the bottom of a boat or a fish box.

**The key to identification:**  
5 spines back from each eye  
3 bumps between the eyes



Green Crab DFO photo



Violet Tunicate  
PEI Dept Agriculture, Fisheries and Aquaculture photo

A case of Violet Tunicate has shown up in Belleorum Harbour on the south coast. This pest grows in "colonies" that form a spongy coating on rocks and wharf pilings. It degrades habitat and coats ropes and aquaculture gear, making them hard to handle and clean. Because the infection in Belleorum is still contained to a relatively small area, DFO is hopeful that it can be wiped out before it spreads.

### Membranipora

Membranipora Membranacea is a lacy crust that grows on kelp, making the kelp leaves very brittle. When the weather is bad and seas are surging, the affected kelp breaks into pieces because it can't flex as it supposed to. There has been some membranipora sighted on the northeast coast, so we know that it is trying to establish here.

### Vessel hygiene

We should all practice good vessel hygiene, especially if we or our summer visitors bring boats from the south or west coasts of the island, the entry points up to this time.

Before trailering your boat:

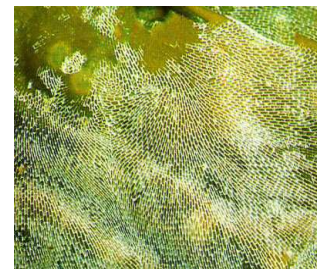
- Wash boat, anchor, trailer and other equipment with fresh water and/or spray with undiluted vinegar
- Remove any plants or animals.
- Drain water from your boat motor, bilge, and wells. Let equipment dry completely, if possible.

For larger vessels:

- Use anti-fouling paint
- Don't take on or release ballast water in port, near aquaculture facilities, or at night.
- Never release live bait, aquarium fish, crayfish, or plants into the water
- Clean clams or other shellfish in the water where they were collected.
- Learn to identify invasive species

You can learn more at:

[www.naia.ca/iasppindex.asp](http://www.naia.ca/iasppindex.asp)

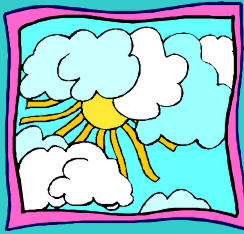


Membranipora Membranacea  
US Geological Survey photo

To report any sightings, call Cynthia McKenzie at DFO (709) 772-6984 or email her at: [MckenzieC@dfo-mpo.gc.ca](mailto:MckenzieC@dfo-mpo.gc.ca)

## Exactly What is a PBGB LOMA?

And well you might ask! It's quite a mouthful—the acronym for the Placentia Bay/Grand Banks Large Ocean Management Area. It's huge—over 500,000 kilometers square, including waters both inside and outside the 200-mile limit. From Placentia Bay it reaches all the way up to the 2J-3K line at Cape Freels. You will soon be hearing about it on news and fisheries broadcasts, as the committee that will help define priorities for the LOMA has just begun its work. The forum will discuss everything from new Marine Protected Areas, the industrial use of our oceans, to Species at Risk and the fisheries. Eastport MPAs Steering Committee has a seat on the PBGB LOMA committee, an important opportunity for us to have a say in the future of our oceans. If you'd like to know more, email Eastport MPAs Community Coordinator at: [nfmpas@yahoo.ca](mailto:nfmpas@yahoo.ca)



Spring is just behind those clouds!

# The Coastal Current

A Quarterly Newsletter Keeping You Current on Marine Protected Areas Issues in Your Community

Volume 5, Issue 2

April 2008



## This issue

Steering Committees Meet page 1

Aquatic Invasive Species page 2

PBGB LOMA page 2



## Meeting Season in Eastport and Gilbert Bay

The Eastport MPA Steering Committee met on February 6. Almost everyone was able to attend, and we had some new members to welcome. Keith Sullivan is taking over the ex-officio FFAV position from John Boland. Ray Sheppard from Conservation & Protection in Clarenville came out to hear about our hopes for this year's allocation of DFO enforcement officer hours around the MPAs.

We also had a very productive discussion about enforcement concerns generally. Ray agreed that if we supplied a brochure about the MPAs, officers would offer it to boaters they talk to during the recreational fishery—a pro-active way to get the information out and head off possible problems.

Dave Cote from Terra Nova Park brought Park Warden Janet Feltham along to meet the committee and they explained the new ecosystem monitoring program starting up in the park this year. They are hopeful that some of the information they will collect might be useful to the MPAs.

After a short supper break, MPA Biologist Jennifer Janes presented preliminary results



Eastport Steering Committee watches a science presentation

from the 2007 lobster monitoring program. Jennifer has been working hard with the tagging program data, and comparing it with data collected in 1997. Her analysis shows how the lobster population has changed 10 years after the closures.

MUN researcher Kate Jones also gave a presentation of her team's results from last year and there was a good discussion about possible directions for science work in 2008. Everyone wants to know where those tiny first-year lobsters are settling!

### Gilbert Bay

The Gilbert Bay Steering Committee met at the Community Centre in William's Harbour, Labrador on March 11th. The intrepid Steering Committee members came across Gilbert Bay by snowmobile from

Port Hope Simpson for the meeting. Some of the items discussed at the meeting were public awareness and future plans for the MPA.

A science briefing was held at the Community Centre the same evening. MPA Biologist, Jennifer Janes, gave updates on the cod and scallop research done by Dr. Joe Wroblewski, his graduate student Shanshan Liu and their teams.

Jennifer also gave an update on the status of the cod population based on research conducted by Corey Morris (DFO Science) and Dr. John Green of Memorial University. Alison Copeland, another member of the MUN research team, gave an update on last year's marine habitat mapping in Zone 1B of the Gilbert Bay Marine Protected Area.



The Gilbert Bay MPA Steering Committee survive another meeting!



Thrills, chills and prayers of thanks on the trip across Gilbert Bay to Port Hope Simpson

Photos—Marilyn Parr-Penney