

Summer at last!

The Coastal Current

A Quarterly Newsletter Keeping You Current on Marine Protected Areas Issues in Your Community

Volume 5, Issue 3

July 2008



This issue

MUN researchers back on the Eastport Peninsula page 1

Labrador Metis assist Gilbert Bay research page 2

Eastport MPAs want lobster tag info page 2



MUN Team Continues Lobster Research in Newman Sound

The lobster research team headed up by Kate Jones of the Ocean Sciences Centre at Memorial University will be back on the Eastport Peninsula this summer to continue the work started last year. Kate and three field assistants will carry out research on the distribution of lobster larvae and first-year juveniles. They plan to cover some of the areas they started investigating last year, as well as expanding to some new test sites.

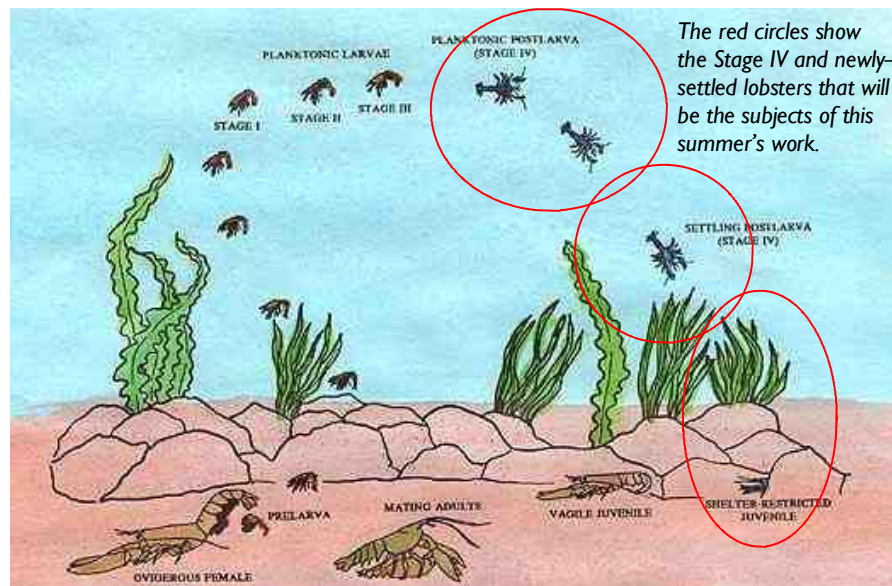
The team will use their fine-mesh neuston net to look for stage IV juvenile lobsters in July and August. Kate explains that although stage IV juveniles are affected by wind and currents, they are fully-formed lobsters and can swim up and down in the water column.

At this stage of their lives, the tiny creatures are looking for safe places on the bottom to settle and grow, "If we find stage IV lobsters, it would be a good indicator that settlement is occurring in the area," Kate told us. "We'll also put out the settlement trays we made last year and hopefully find some newly-settled lobsters."

The wire settlement trays filled with "cobble" (fist-sized rocks) will be put out around the second week in July and left in the water until early November. The team will put the trays out around Round Island and will also try some new areas in Newman Sound, hoping to find the "hot spots." The research will also include dive surveys and inter-tidal surveys during the summer months.

The team will rely on local fishers for advice and water transport as they did last year. Kate is hoping that anyone who sees lobster larvae, or knows of likely spots for young lobsters to settle will offer some tips about where the team should focus their efforts.

Kate is also asking anyone with questions or concerns about the research project to get in touch with her. If you have tips, suggestions or questions for the research team, call the MPA Coordinator at 677-2486. She can pass the messages on until Kate and the crew have their summer headquarters set up with their own phone line. The MPA Steering Committee would like to thank DFO and Memorial University for supporting this important work.



The red circles show the Stage IV and newly-settled lobsters that will be the subjects of this summer's work.

Summary of the Lobster Lifecycle, from *Biology of the Lobster* (Jan Factor, Editor) State University of New York, copyright held by Elsevier Ltd, UK .Used with permission.

We're on the Web!



www.gilbertbay.com



www.eastportmpa.com

Thanks to Our Friends & Sponsors!

Kittiwake Economic Development Corporation

Labrador Metis Nation

Labrador Southeast Coastal Action Plan



Labrador Metis Nation Assists with Research in Gilbert Bay

From June 4 -12 this year, the Gilbert Bay MPA saw a boost in resources dedicated to research in the MPA. During this time, the Labrador Metis Nation (LMN) helped to assist Dr. John Green and DFO's Corey Morris with research on the unique Atlantic cod population in Gilbert Bay.

Through an Aboriginal Fisheries Species At Risk Program, the LMN was able to purchase and deploy 10 new VR2W receivers and 25 new sonic tags in the

Gilbert Bay area, doubling the previous number of receivers in use in the area and greatly increasing the number of sonic tags being monitored.

The LMN was also able to assist with the tagging and recapture program already in place in Gilbert Bay and was able to observe how the researchers conducted plankton tows for cod eggs in the area.

Data from the sonic tags that have been deployed will be

collected by the new receivers throughout the summer months, and the information will be downloaded by the LMN later in the season. The increased capacity to monitor Gilbert Bay cod, will greatly assist in our understanding of Gilbert Bay cod migration patterns and will increase the LMN's capacity to carry out future work in related areas of research.

Article and photos by
Wayne Russell



LMN Guardian George Morris removes a hook during the tagging and recapture program.



George Morris and Jonathan Crocker prepare new receivers to be set out in Gilbert Bay

Eastport MPAs Want Your Lobster Tag Information!

According to fishers, this hasn't been a wonderful year for the lobster fishery, with cold water and contrary winds, but it seems likely that when the numbers are in, landings will be within the normal range. And we are pretty sure that fishers have recovered at least a few tagged lobsters.

We're hoping that fishers have been noting the tag information to pass on the MPA Coordinator. The data is valuable to our program, which is why we'll hold a draw again this year to show our appreciation for fishers who take the time to help us keep track of our favourite crustaceans. Call Vicky at 677-2486—you can give your data over the phone, or she will pick up your recording sheet



Have you seen this lobster? We need to know when, where, tag #, sex and approximate size (keeper or undersize).