



Fall is here again—batten down the hatches!

The Coastal Current

A Quarterly Newsletter Keeping You Current on Marine Protected Areas Issues in Your Community

Volume 5, Issue 4

October 2008

MUN Researchers Look for Tiny Lobsters Around Eastport MPAs

Once again this summer, the MUN research team have been busy investigating larval lobster distribution in the waters around the Eastport MPAs.

Neuston tows for larval lobsters were conducted at five sites outside of Happy Adventure Harbour, at Half-way Rock, Peter Hall's Rock, Round Island, and at the mouth of Newman Sound.

The greatest number of larvae were caught on July 30, with 19 found in a 30-minute tow

just outside of Happy Adventure Harbour and 17 found at Round Island.

The last neuston tows were conducted on September 23. By sampling this late in the season we hoped to find some of the larger stage IV lobsters. Their presence would have been a sign of possible settlement in the area. However, no stage IV lobsters were found during our last sampling trip.

In June we also deployed 49 settlement trays at Round Island and nearby areas. The settlement trays are used to catch newly-settled lobsters (about the size of your fingernail). We plan to return in early November to retrieve the settlement trays and see if we have caught any!



Settlement trays ready to go into the water

We would like to thank Rick Elliot and Boyd Squire for their help with towing this season—we couldn't have done it without them. Also, a big "thank you" goes out to George Feltham and Terry Travers for their help again this year with placing and retrieving the settlement trays.

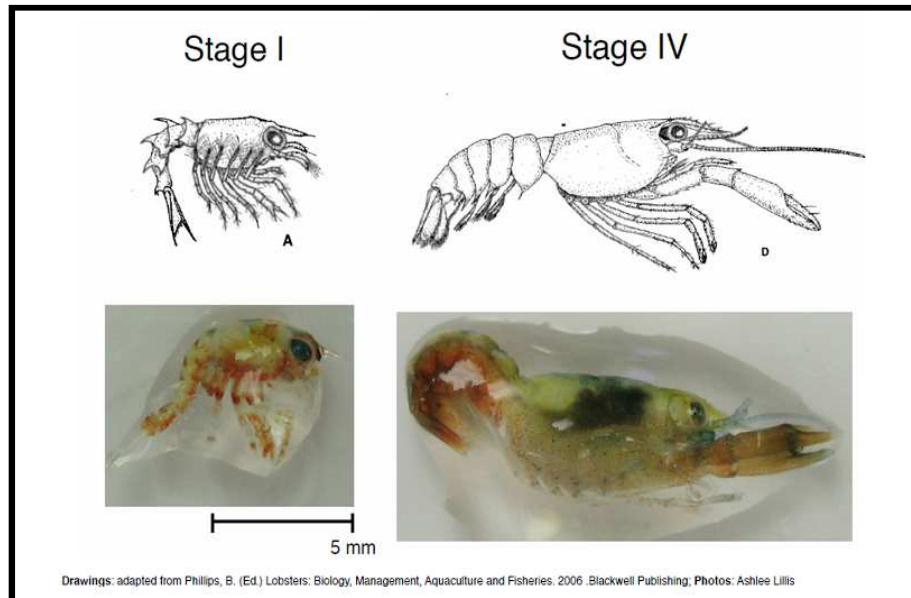
Article and photo by
Kate Wilke



This issue

MUN Research at the Eastport MPAs
page 1

Sampling and tagging in Eastport and Gilbert Bay MPAs
page 2



Drawings: adapted from Phillips, B. (Ed.) Lobsters: Biology, Management, Aquaculture and Fisheries, 2006. Blackwell Publishing. Photos: Ashlee Lillis

This illustration, prepared by Ashlee Lillis, shows the Stage I lobsters that drift on and near the surface and the Stage IVs that swim up and down and are ready to settle on the bottom.

We're on the Web!



www.gilbertbay.com



www.eastportmpa.com

Thanks to Our Friends & Sponsors!

Kittiwake Economic Development Corporation

Labrador Southeast Coastal Action Plan

Fisheries and Oceans Canada / Pêches et Océans Canada

2008 Sampling and Tagging Programs

The Gilbert Bay Steering Committee would like to remind people that it is very important for them to return tags found in cod caught in the Gilbert Bay area. Include a note stating the location where the fish was caught, as well as the length of the fish. The tags are positioned just below the dorsal fin (shown in yellow circles below).

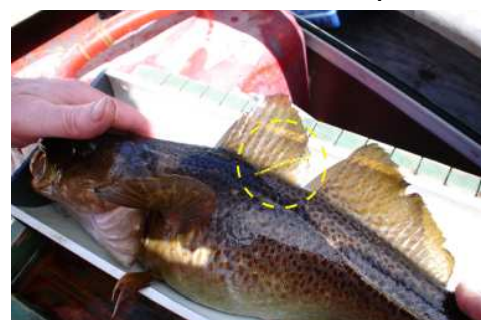
DFO scientist Corey Morris points out that these tag returns are the only way that we can effectively measure spill-over from the Gilbert Bay MPA into commercially-fished adjacent areas.

There is also a reward of \$35.00 for sonic tags which have been inserted into the body cavities of some cod.

The sonic tags are 3-inch-long black cylinders.

Forward your tags and information to: Marilyn Parr-Penney MPA Coordinator Port Hope Simpson, NL A0K 4E0 Phone: (709) 960-1010 Fax: (709) 960-1012

Photos: Gilbert Bay MPA



Eastport MPAs had a good year with the annual At-Sea Sampling program, despite a slow start to the season. From St. Chad's to Salvage and Broom Close Harbour, and from Happy Adventure to the Narrows in Newman Sound, three crews sampled more than 2300 lobsters. That should keep MPA Biologist Jennifer Janes busy "crunching" for awhile!

Lobster tag returns from the commercial fishery were also very good—we received over 400 returns from local fishers. A prize draw was held at Eastport's SeaFest celebration and this year's prize went to Boyd Squire.

Once again, our seasoned Fall Tagging crews did an excellent job despite some wild and windy weather in

September. Under a special ministerial permit, the two crews captured, measured, recorded and released over 1000 lobsters inside and outside the MPAs. Tagging data yields a lot of valuable information about how those lucky MPA lobsters are doing in their protected habitat. Once again, a great big THANK YOU! to all who participated.



DFO photos